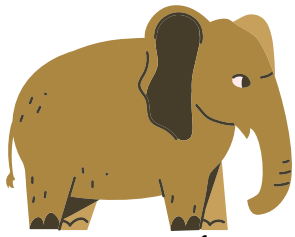


MULTIPLY AND DIVIDE MIXED NUMBER

ANSWERS

MULTIPLY AND WRITE IN SIMPLEST FORM

1. $2\frac{1}{5} \times 1\frac{2}{3} = \frac{11}{3}$ 2. $1\frac{5}{3} \times 2\frac{3}{2} = \frac{28}{3}$ 3. $9\frac{15}{12} \times 2 = \frac{123}{6}$
4. $3\frac{6}{5} \times 2\frac{5}{2} = \frac{189}{10}$ 5. $2\frac{2}{5} \times 5\frac{1}{2} = \frac{66}{5}$ 6. $3\frac{2}{5} \times 3\frac{1}{3} = \frac{34}{3}$
7. $5\frac{7}{4} \times 1\frac{1}{12} = \frac{351}{48}$ 8. $4 \times 3\frac{4}{6} = \frac{44}{3}$ 9. $4\frac{6}{7} \times 10\frac{4}{6} = \frac{1088}{21}$
10. $8 \times 2\frac{11}{6} = \frac{92}{3}$ 11. $8\frac{4}{3} \times 1\frac{7}{2} = 42$ 12. $5\frac{1}{5} \times 2\frac{1}{4} = \frac{117}{10}$
13. $6\frac{6}{2} \times 3\frac{8}{4} = 45$ 14. $2\frac{5}{9} \times 2\frac{5}{8} = \frac{161}{24}$ 15. $6\frac{1}{4} \times 4\frac{1}{4} = \frac{425}{16}$



DIVIDE AND WRITE IN SIMPLEST FORM

1. $11\frac{1}{7} \div 2\frac{6}{10} = \frac{30}{7}$ 2. $4\frac{1}{3} \div 2\frac{1}{5} = \frac{65}{33}$ 3. $5\frac{6}{4} \div 2 = \frac{13}{4}$
4. $3\frac{6}{5} \div 2 = \frac{21}{10}$ 5. $5\frac{3}{12} \div 3\frac{3}{2} = \frac{21}{18}$ 6. $3\frac{2}{5} \div 3\frac{1}{3} = \frac{51}{50}$
7. $1\frac{1}{2} \div 2\frac{5}{10} = \frac{3}{5}$ 8. $1\frac{7}{1} \div 3 = \frac{8}{3}$ 9. $10\frac{7}{2} \div 2\frac{4}{6} = \frac{81}{16}$
10. $6 \div 7\frac{4}{8} = \frac{4}{5}$ 11. $8\frac{3}{9} \div 2\frac{7}{3} = \frac{25}{13}$ 12. $5\frac{1}{4} \div 2\frac{1}{4} = \frac{7}{3}$

