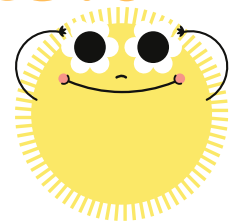


Solving One-Step Equation

MULTIPLY AND DIVIDE WITH DECIMALS

HELPFUL EXAMPLES



$$y \div 2.5 = 4.5$$

GET THE NUMBERS AND VARIABLES ON OPPOSITE SIDE OF THE EQUAL SIGN.

TO MOVE A NUMBER OR VARIABLE, USE THE OPPOSITE OPERATION. MULTIPLICATION AND DIVISION ARE OPPOSITES, SEE HOW WE MULTIPLIED BOTH SIDES BY 2.5?

$$y \div 2.5 = 4.5$$

$$\times 2.5 = \times 2.5$$

$$y \div 1 = 11.25$$

$$y = 11.25$$

CHANGE Y TO 11.25 AND SEE IF THE ANSWER MAKES SENSE

$$11.25 \div 2.5 = 4.5$$

TRUE

Now your turn. Solve each equation.

ANSWER

$$1. \quad 29.2 = 8 \times s$$

$$\frac{29.2}{\div 8} = \frac{8 \times s}{\div 8}$$
$$29.2 \div 8 = s$$

$$2. \quad 4.6 = y \div 3.8$$

$$y = 17.48$$

$$3. \quad 12.2 = t \div 0.2$$

$$t = 2.44$$

$$4. \quad 0.8 \times g = 5.4$$

$$g = 6.75$$

$$5. \quad n \div 3.5 = 2.4$$

$$n = 8.4$$

$$6. \quad p \times 1.8 = 7.2$$

$$p = 4$$

$$7. \quad \frac{b}{1.2} = 8.2$$

$$b = 9.84$$

$$8. \quad 3.46 = 0.4h$$

$$h = 8.65$$

$$9. \quad 8e = 18.62$$

$$e = 2.32$$

$$10. \quad 64.6 = \frac{p}{6}$$

$$p = 387.6$$

$$11. \quad \frac{m}{0.5} = 8.75$$

$$m = 4.375$$

$$12. \quad 31.4 = 4.4u$$

$$u = 7.13$$

